

FIGURE 1: Precipitation pattern during the monitoring period: a) 10/07 – 9/08; b) 10/08 – 10/09. Figure reconstructed from data collected at USGS station #50045000, located at the dam section of the reservoir. Each point represents a daily cumulative value from data gathered at 15-minute intervals.

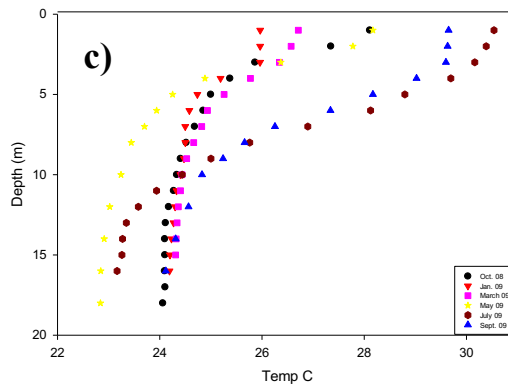
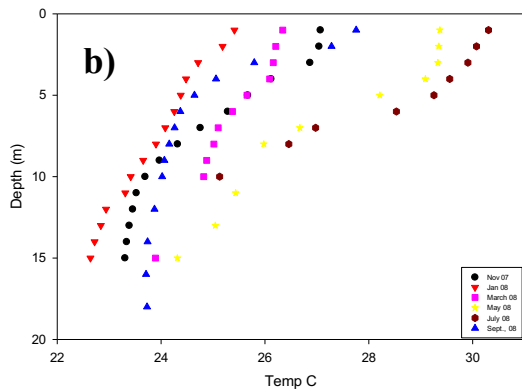
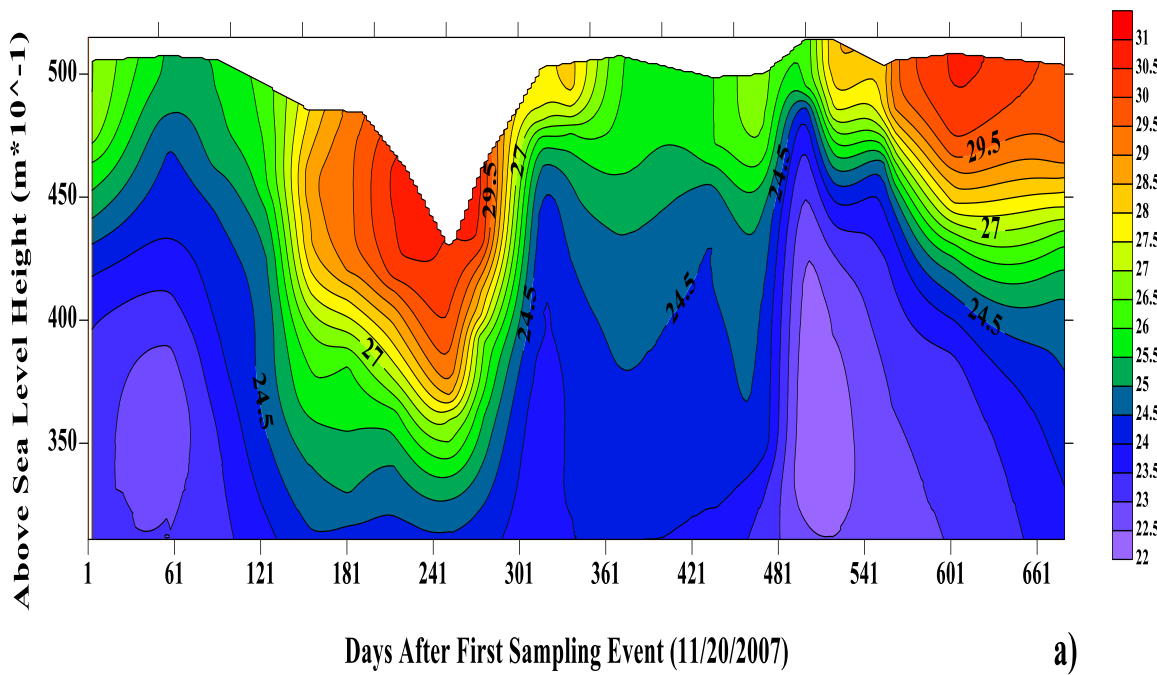


FIGURE 2: a) Depth-time distribution of temperature ( $^{\circ}\text{C}$ ) isopleths for La Plata reservoir; b) temperature depth profiles for selected months (2007–2008); c) temperature depth profiles for selected months (2008–2009).

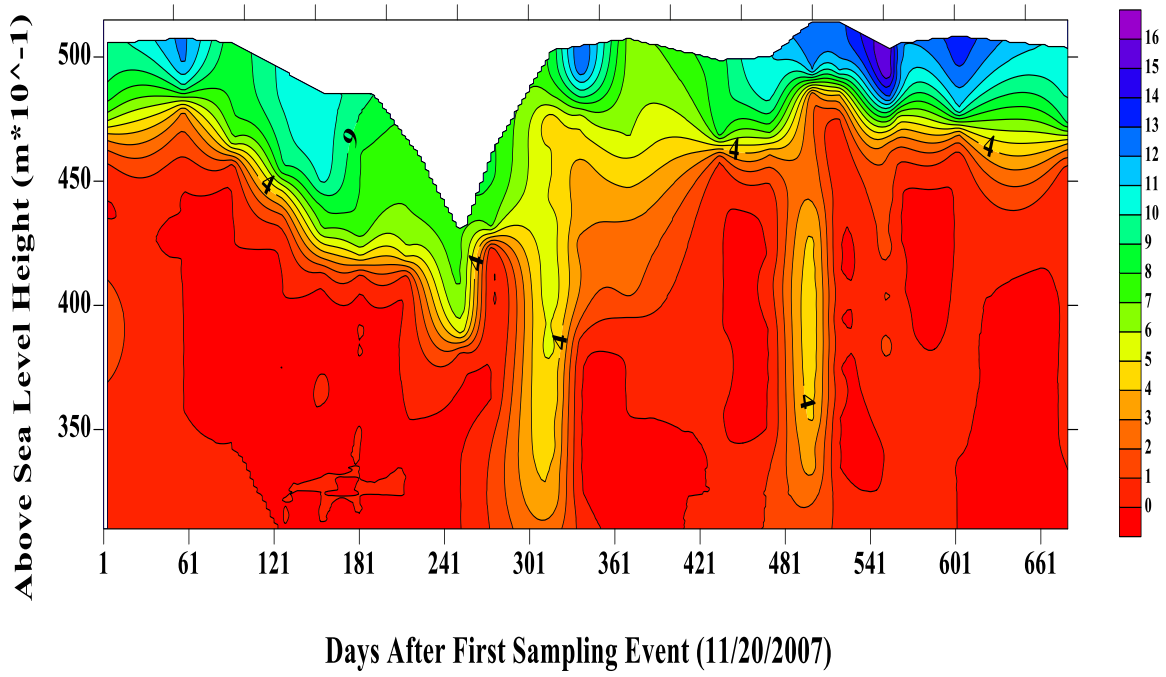


FIGURE 3: Depth-time distribution of dissolved oxygen concentration (mg/L) isopleths for La Plata reservoir.

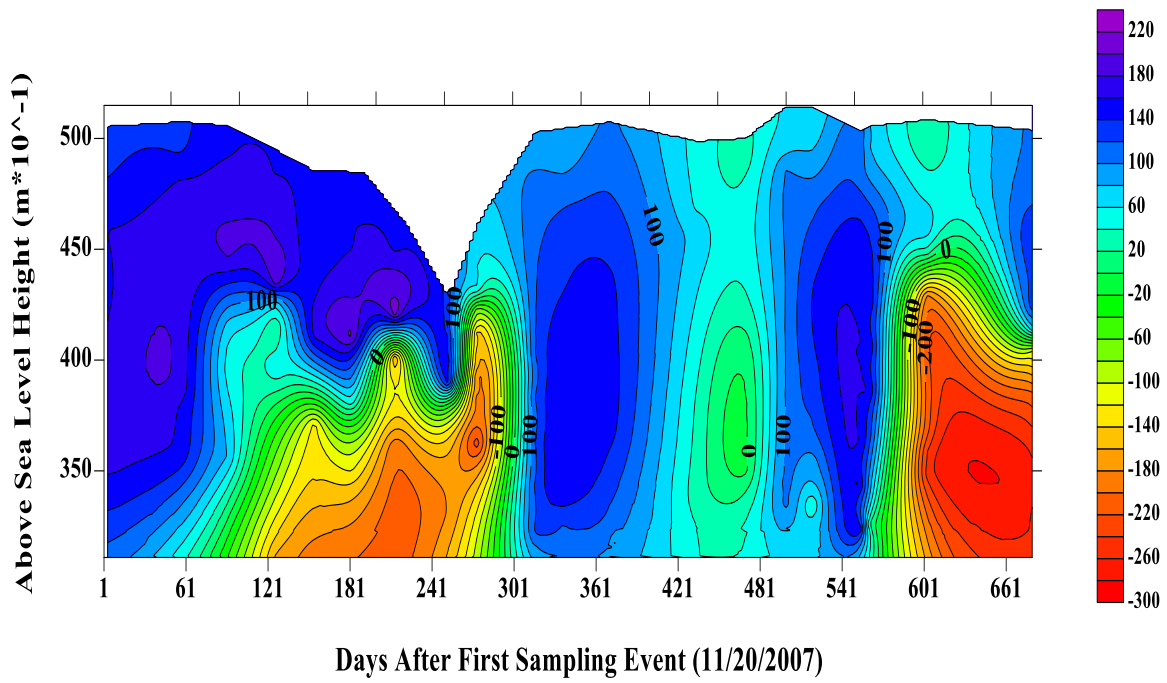


FIGURE 4: Depth-time distribution of reduction potential ( $E_7$ ) isopleths for La Plata reservoir.

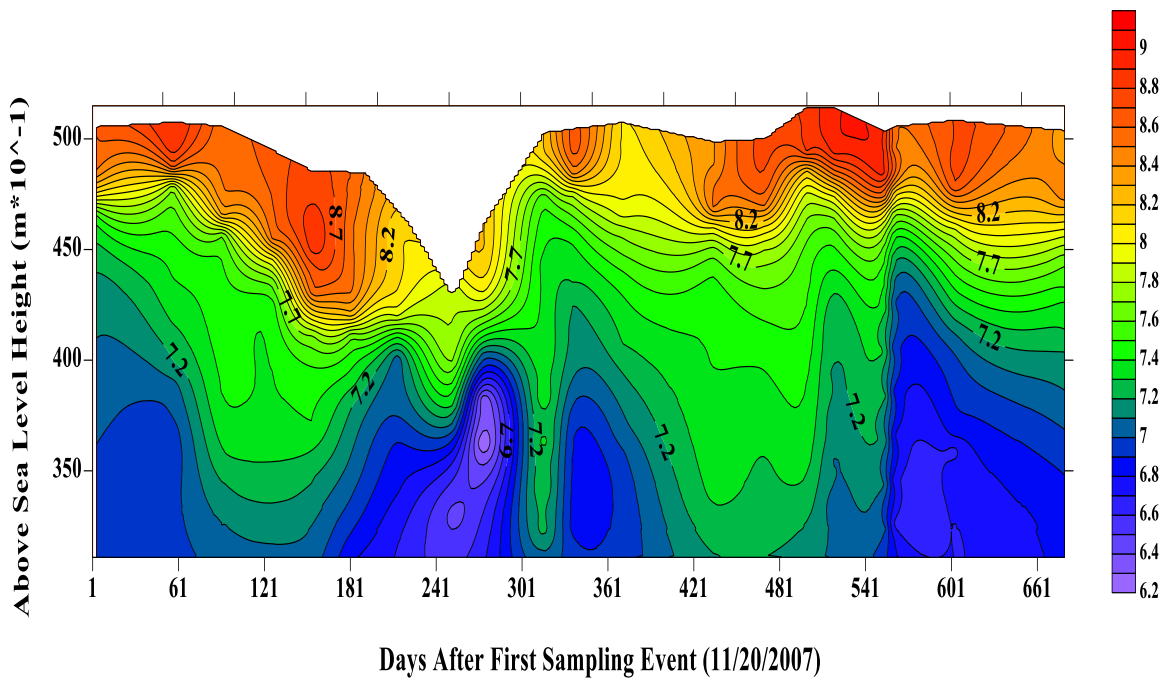


FIGURE 5: Depth-time distribution of pH isopleths for La Plata reservoir.

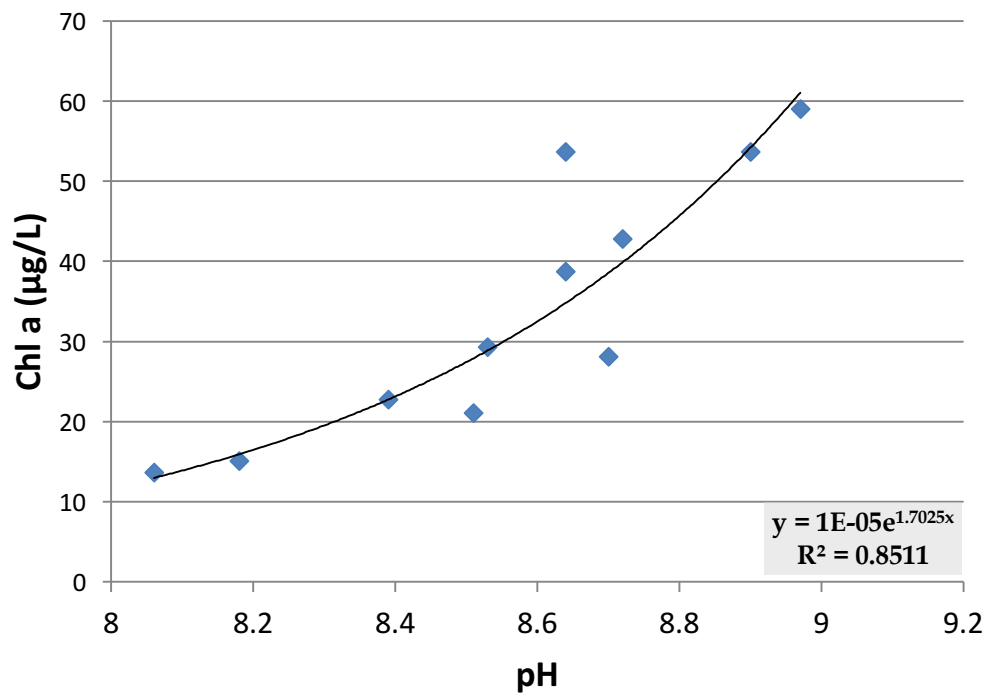


FIGURE 6: Relationship between pH and chlorophyll *a* in the surface waters (one meter) of La Plata reservoir.

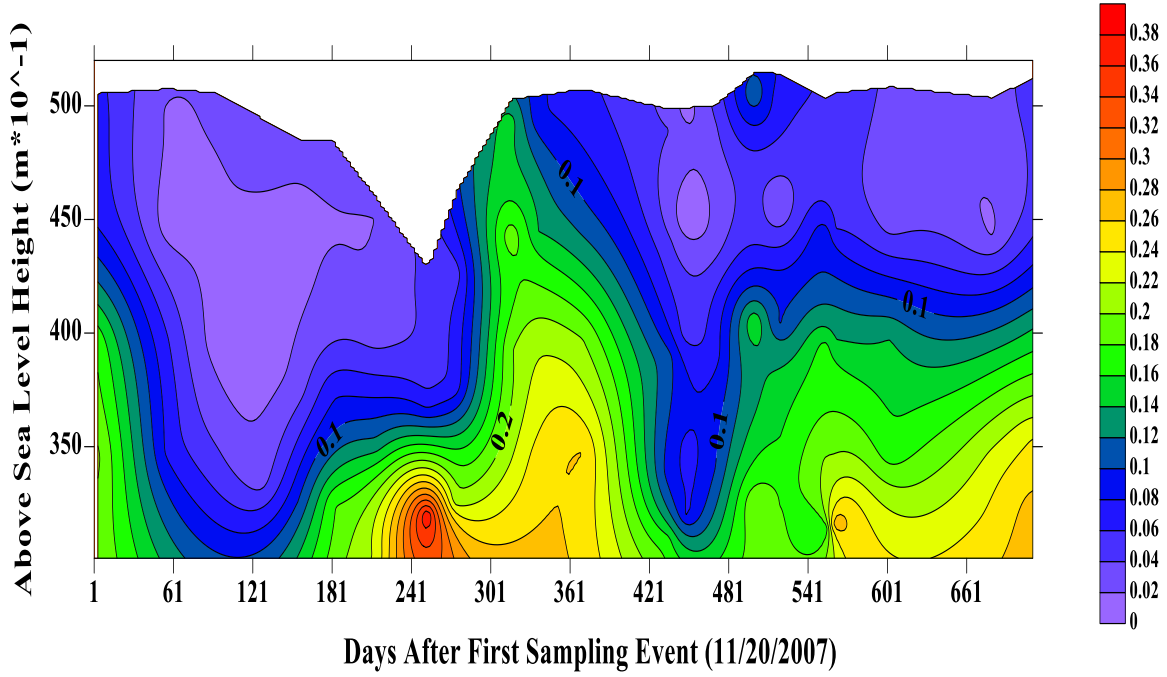


FIGURE 7: Depth-time distribution of total phosphorus (mg/L) isopleths for La Plata reservoir.

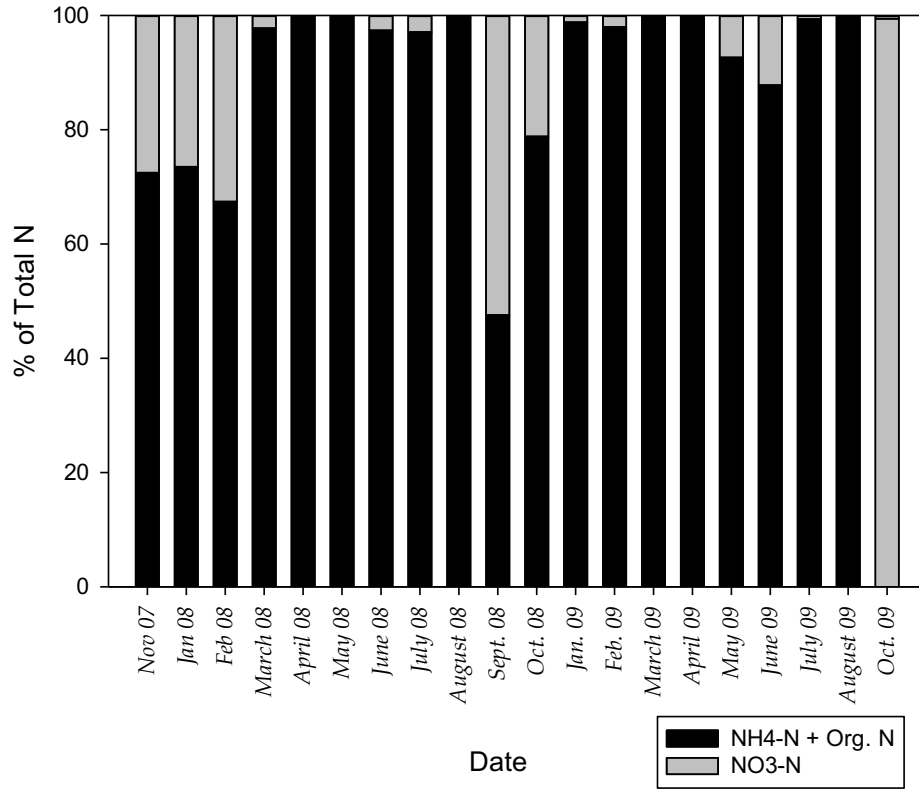


FIGURE 8: Relative composition of total nitrogen at the epilimnion.



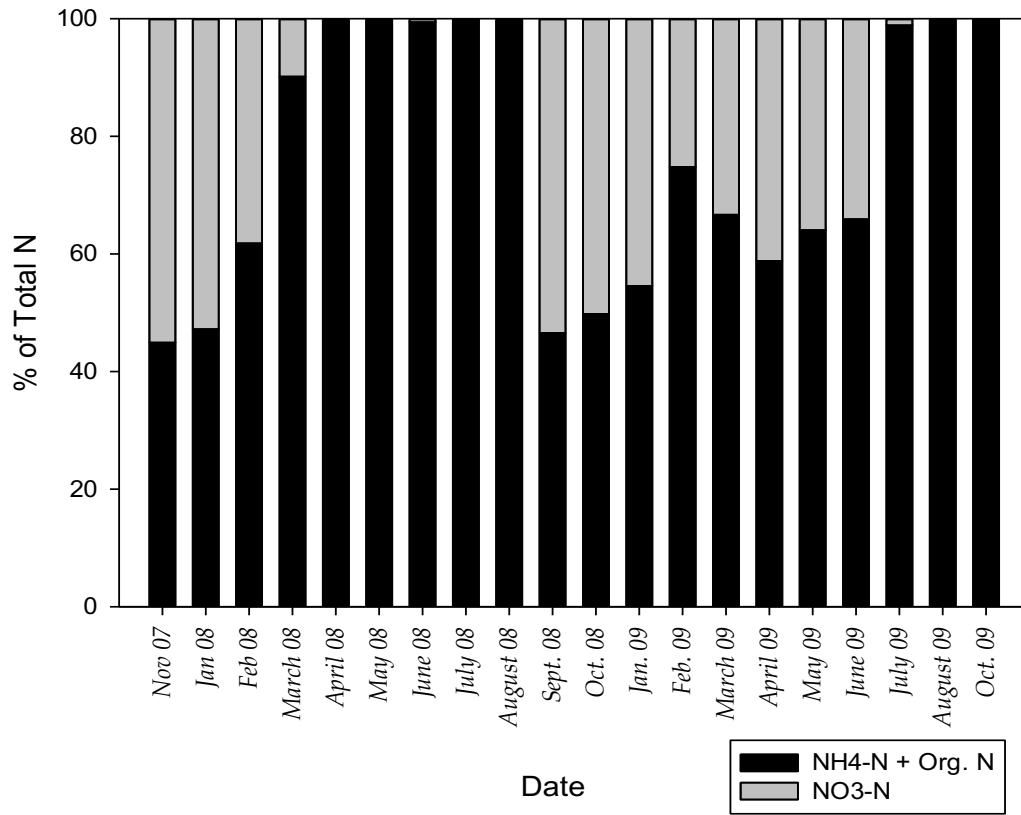


FIGURE 9: Relative composition of total nitrogen at the hypolimnion.

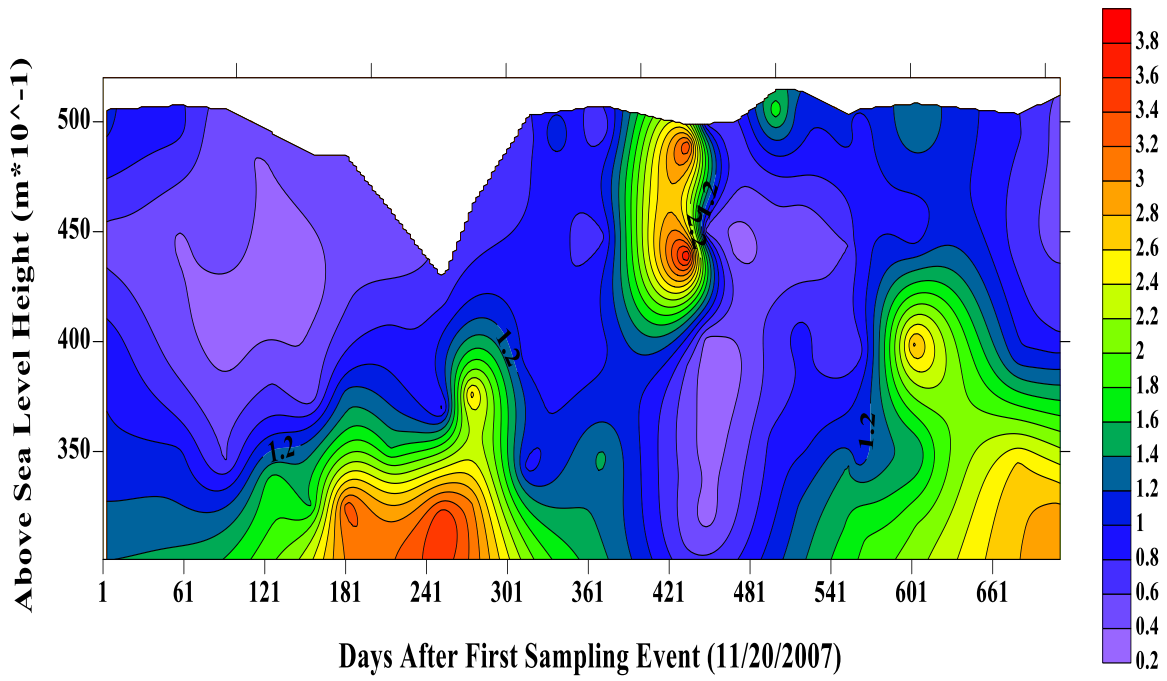


FIGURE 10: Depth-time distribution of total Kjeldahl nitrogen (mg/L) isopleths for La Plata reservoir.

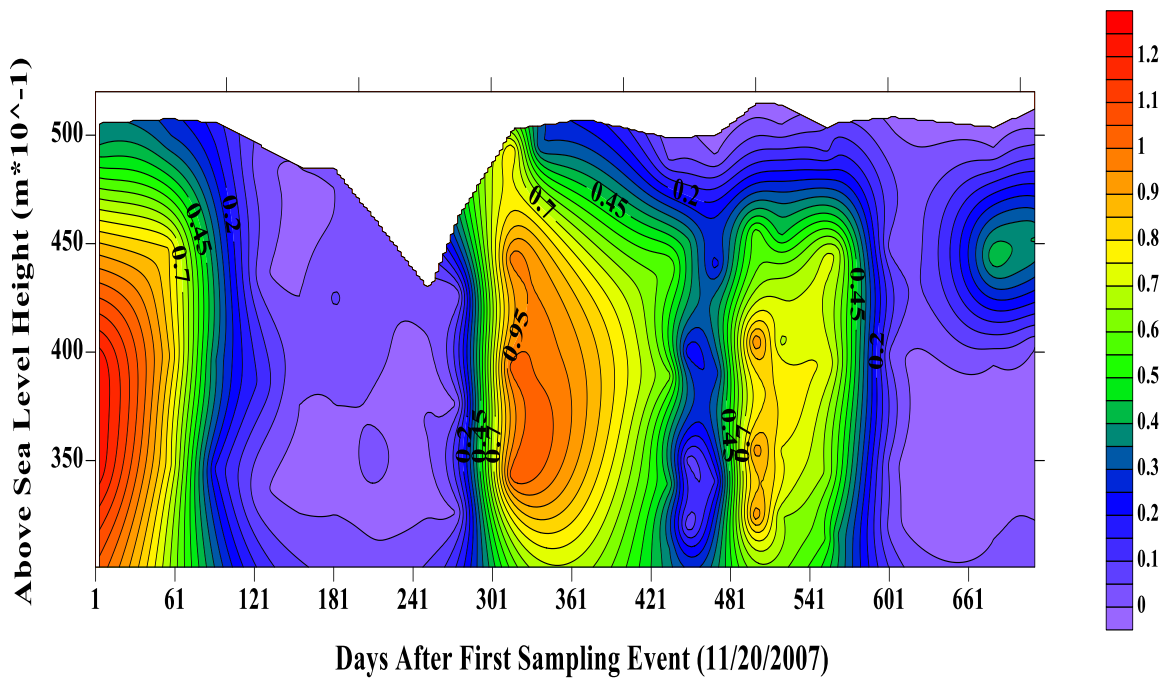


FIGURE 11: Depth-time distribution of  $\text{NO}_3\text{-N}$  (mg/L) isopleths for La Plata reservoir.

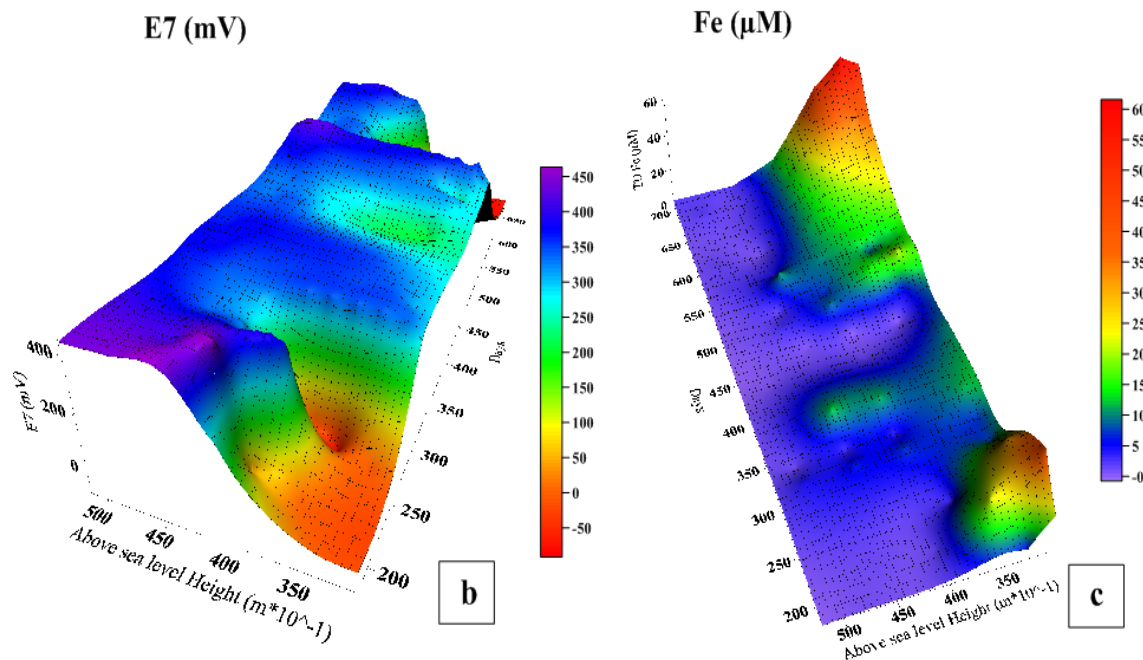
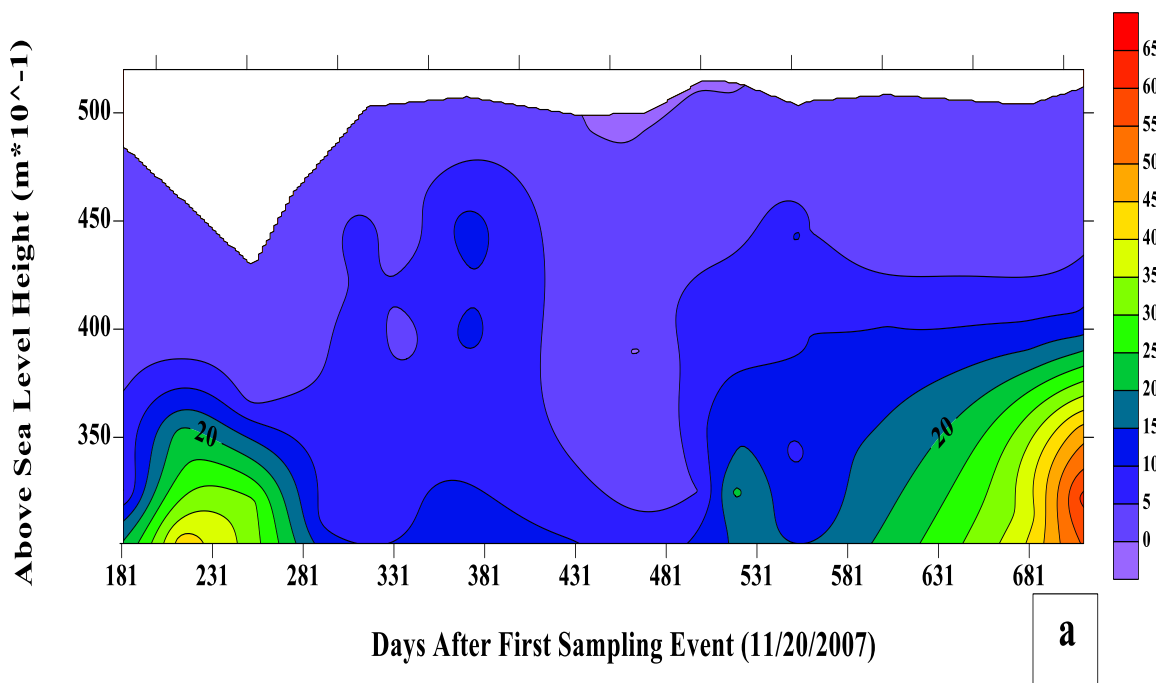


FIGURE 12: a) Depth-time distribution of total dissolved (TD) Fe ( $\mu\text{M}$ ) isopleths at La Plata reservoir; b) tridimensional plot of variations in reduction potential ( $E_7$ ) with time; and c) tridimensional plot of variations in TDFe with time.

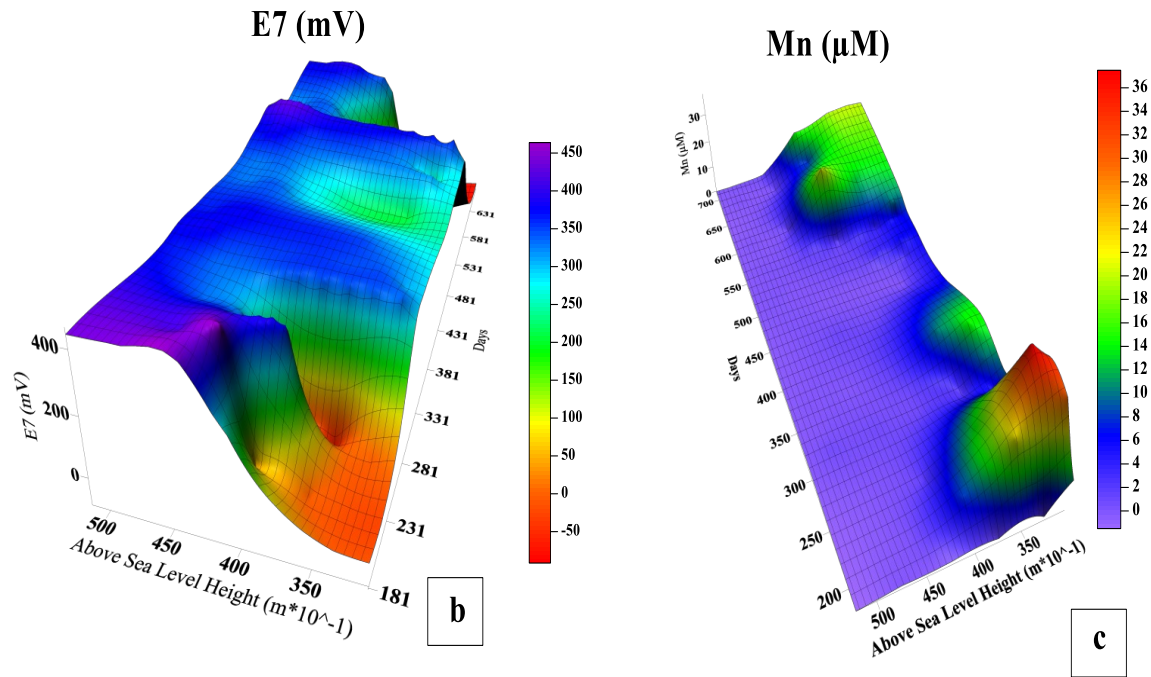
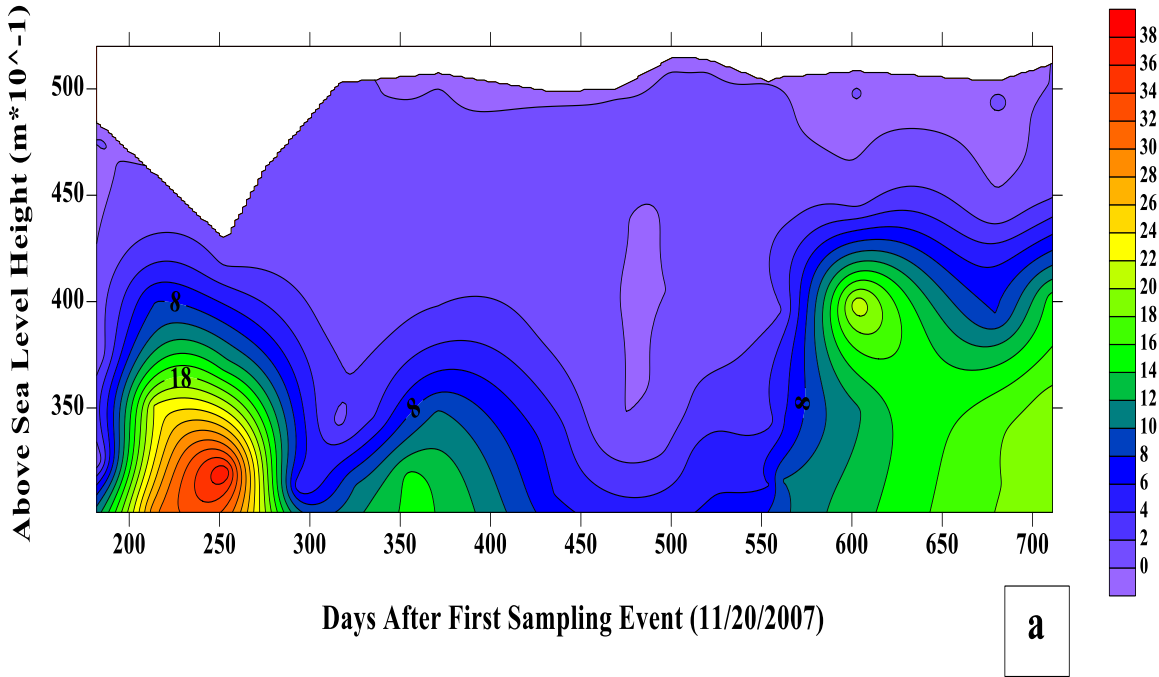


FIGURE 13: a) Depth-time distribution of total dissolved (TD) Mn ( $\mu\text{M}$ ) isopleths at La Plata reservoir; b) tridimensional plot of variations in reduction potential ( $E_7$ ) with time; and c) tridimensional plot of variations in TDMn with time.



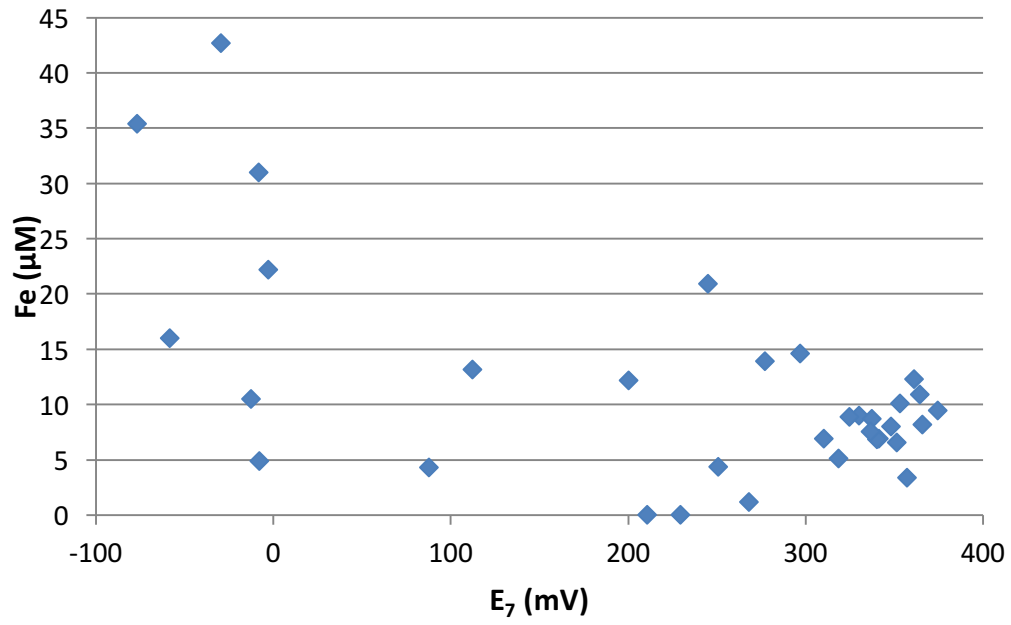


FIGURE 14: Relationship between reduction potential and TDFe in the bottom (hypolimnion) waters of La Plata reservoir.

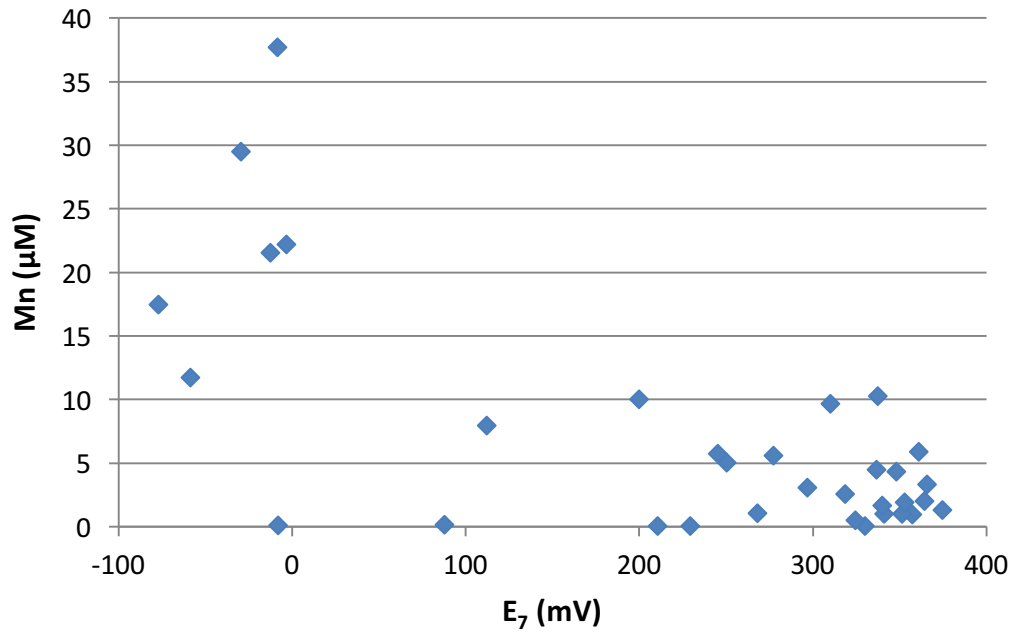


FIGURE 15: Relationship between reduction potential and TDMn in the bottom (hypolimnion) waters of La Plata reservoir.



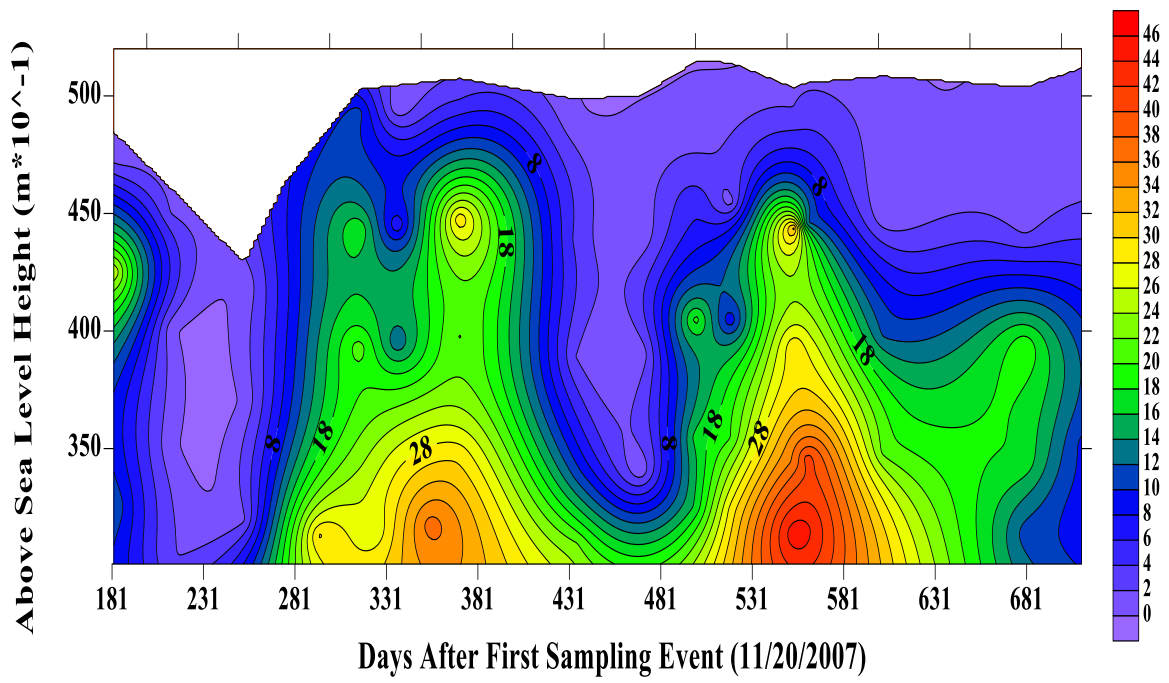


FIGURE 16: Depth-time distribution of total dissolved (TD) Al ( $\mu\text{M}$ ) isopleths at La Plata reservoir.

