

## A NEW SPINNING MITE ATTACKING SUGAR CANE IN PUERTO RICO

By E. A. MCGREGOR, U. S. DEPARTMENT OF AGRICULTURE,  
BUREAU OF ENTOMOLOGY AND PLANT QUARANTINE.

Several lots of a mite have been received from Puerto Rico, where it is said to cause some damage to sugar cane. This mite proves to be new and is described as follows:

### PARATETRANYCHUS SACCHARI, NEW SPECIES

*Female.* Color yellowish-green. Body outline (viewed from above) more narrowly elliptical than with most species of the genus. Dorsal bristles 26, not arising from tubercles. A single perfect eye cornea on each side. Mandibular plate not noticeably notched anteriorly. "Thumb" of palpus thicker than long, bearing at its tip a terminal "finger" whose greatest thickness is about two-thirds that of "thumb" at tip; terminal "finger" four-fifths as thick as its length, barely spatulate in profile; on upper distal angle of the "thumb" are two pin-shaped digituli; from near the middle of the upper face of the "thumb" arises a sensilla which is slightly longer than the terminal "finger" and is thicker than usual; a short hair arises immediately behind the dorsal sensilla, and a strong seta arises dorsally from the "thumb" near its base; a hair arises from near the middle of the ventral face of the "thumb". Claw on antepenultimate joint of palpus hardly reaching dorsal sensilla. Forelegs (adult female) barely more than one-half length of body (to tip of mandibular plate). Relative lengths of joints of leg I as follows: Trochanter 9, femur 29, patella 14, tibia 16, tarsus 29. Tip of tarsus bearing a strong, simple claw which is not much bent at any point; arising ventrally from near the base of the main tarsal claw are six straightish spurs which are considerably exceeded in length by the main claw; the usual four tenent hairs are present, a pair arising at each side of the claw base. Collar trachea extending backward as a straightish tube, the inner end barely enlarged.

*Male.* Length and width of body much less than in female. Forelegs

portionately longer than in female. Penis with inner lobe rodlike, in profile expanding extremely abruptly at its point of fusion with the shaft; dorsal basilar lobe present in the form of a prominent, sharply rounded protuberance; shaft with greatest thickness almost equal to its length, narrowed very abruptly posteriorly and bent upward and forward more than 90 degrees from its main axis in the form of a slender hook; the hook in turn is bent sharply backward and downward, terminating in a sharp point; profile of shaft and hook together resembling that of the forebody, neck and head of a swan.

*Type slides.* Cat. No. 1422, United States National Museum.

The type material is from Mayagüez, Puerto Rico, April 21, 1939, from sugar cane, collected by H. K. Plank. This mite was subsequently received from G. N. Wolcott, who collected it from sugar cane, sorghum, and a grass. Regarding this mite Doctor Wolcott writes that it seems to be of increasing importance in Puerto Rico. The first occurrences were noted on the cane variety Mayagüez 28, but it has since been observed on several other kinds of cane grown in Puerto Rico. Wolcott's first collection was made in a greenhouse on the Experiment Station grounds at Río Piedras, and subsequent collections were made at Loíza, Toa Baja, Dorado, Arecibo, Isabela, and Aguadilla, all in the northern part of the Island.

A second species of mite, *Paratetranychus viridis* Banks, (det. by Ewing) has also been reported from sugar cane in Puerto Rico.

In the male genital structure *Paratetranychus sacchari*, n. sp., is completely distinct from, and can hardly be likened to, any described mite. The penis is perhaps closest to that of *P. citri* McG., but in its other structural details bears no resemblance to this species. Zehntner's *Paratetranychus (Tetranychus) exsiccator*, from sugar cane in Java, is very distinct from the present species. *P. indicus* Hirts, which occurs on sugar cane in the Punjab, also appears to be distinct.

#### SUMARIO

UNA NUEVA ARÁCNIDA (*Paratetranychus sacchari* McGregor)  
ATAACANDO LA CAÑA DE AZÚCAR EN PUERTO RICO.

Se describe una nueva arácnida (*Paratetranychus sacchari* McG.) atacando la caña de azúcar en Puerto Rico. Esta especie se describe como distinta de la otra especie *Paratetranychus viridis* Banks que también existe en la caña de azúcar en Puerto Rico.

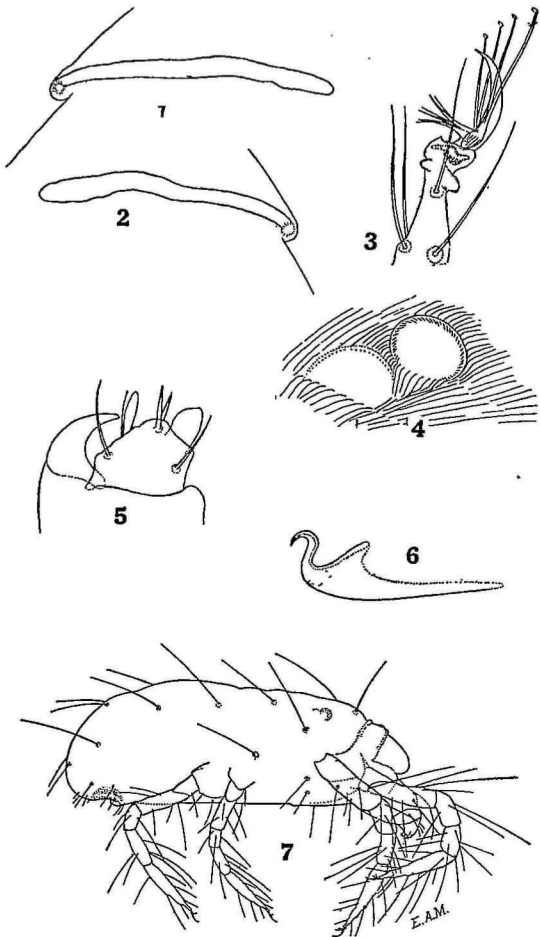


PLATE I. *Paratetranychus sacchari*.

## EXPLANATION OF PLATE I.

*Paratetranychus sacchari*, NEW SPECIES

- Figures 1 and 2. Collar tracheae.  
Figure 3. Tarsal appendages of foreleg of female (lateral view).  
Figure 4. Perfect and imperfect eye corneae.  
Figure 5. Tip of palpus of female and its appendages (lateral view).  
Figure 6. Penis (lateral view).  
Figure 7. Adult female (lateral view).